



KULTHORN KIRBY PUBLIC CO., LTD.

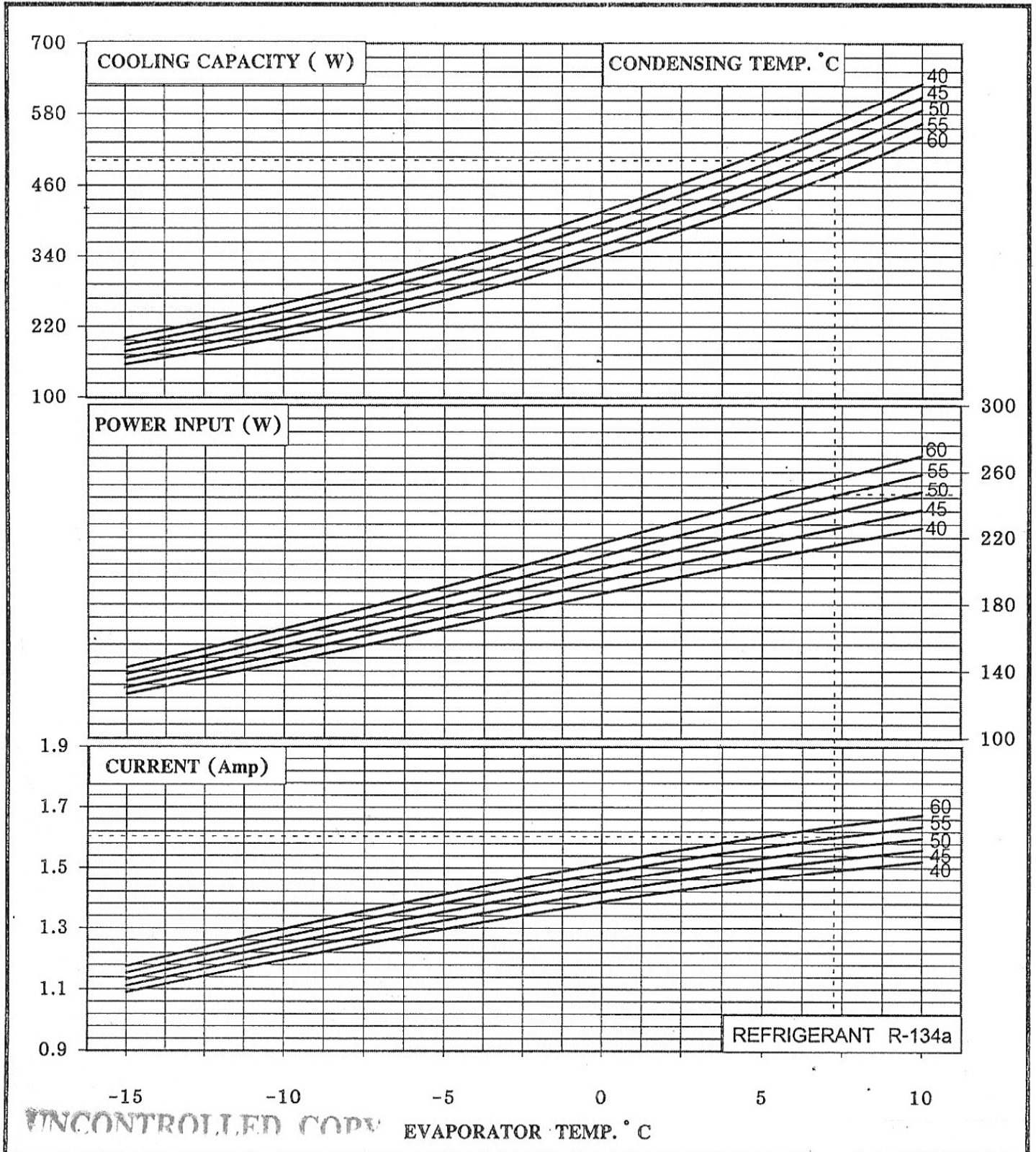
THAILAND - *Tecumseh* LICENSEE

HERMETIC
COMPRESSOR

AE 3417Y

PERFORMANCE CURVES

Electrical : 220-240 Volt 50 Hz 1 Phase Motor Type R.S.I.R



UNCONTROLLED COPY

Cooling Capacity	500	W	} At rating Conditions
Power Input	245	W	
Current	1.60	Amp	

PERFORMANCE CURVES

Prepared by *Sungkan* Date: 15/10/98
 Approved by: *P.O.C.* Date: 15/12/98
 (Research & Development Engineer)



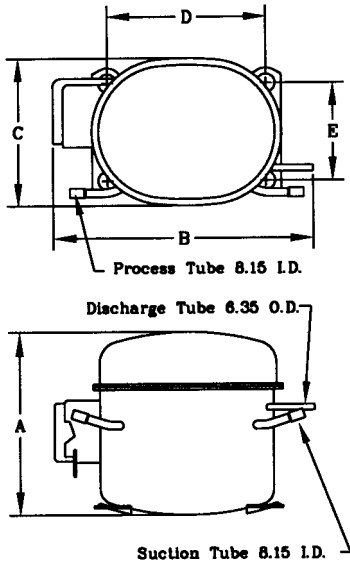
KULTHORN KIRBY PUBLIC CO.,LTD.

TECHNICAL SPECIFICATION

HERMETIC COMPRESSOR AE2416ZK-2SR

High Torque Start

PRINCIPAL DIMENSIONS - mm



A	189
B	277
C	159
D	165
E	102

ELECTRICAL : 208-230 Volt. 60 Hz. 1 Phase

Nominal Performance

Cooling Capacity :	463 / 497	Watts (1,580 / 1,696)	BTU/Hr
	398 / 427	Kcal/Hr	
Power Input :	348 / 375	Watts	
Lock Rotor Amps :	15.50 / 15.50	Amps	
Rated Load Amps :	1.72 / 1.85	Amps	
COP :	1.33 / 1.33	Watts/ Watts	

Testing Conditions

Condensing Temperature	54.4	°C
Evaporating Temperature	-23.3	°C
Liquid Temperature :	32.2	°C
Return Gas Temperature :	32.2	°C
Ambient Temperature :	32.2	°C

Application

Evaporating Range :	LBP	@ -40 °C to -12.2 °C
Refrigerant :	R404A/R507	
Expansion :	Capillary Tube	
Compressor Cooling :	Fan	

Compressor and Motor data

Compression Type :	Reciprocating
Displacement :	8.12 cc.
Oil Type :	Polyolester Oil
Oil Charge :	350 cc.
Motor Type :	C.S.R. ; 2 Pole 3500 / 3500 r / m
Voltage Range :	187-264 Volts 60 Hz.
Winding Resistance at 25 °C	
Start :	12.90 Ohms
Run :	4.60 Ohms
Weight with Oil :	11.07 Kg.
Weight with Oil and Accessories :	11.48 Kg.

Electrical Components

Motor Protector :

Type :	External 3/4"
Model Number :	KME 660-17/C (MRA68155)
Open / Close :	115-125 / 87-69 °C
1st Cycle trip at 25 °C :	12.8 Amps

Motor Starter :

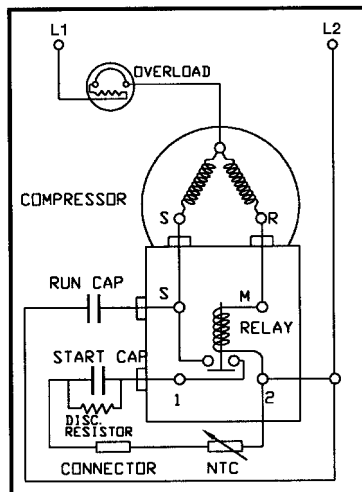
Type :	Current Relay
Model Number :	KME 682-6NT (9660A243NT-155)
Pick Up (max.) :	8.4 Amps
Drop Out(min.) :	7.4 Amps
Terminal Cover :	KMD 901-5

Start Capacitor :	40	μ F	330	VAC.
Run Capacitor :	5	μ F	440	VAC.
Disch. Resistor :	15000	Ohms	2 W	

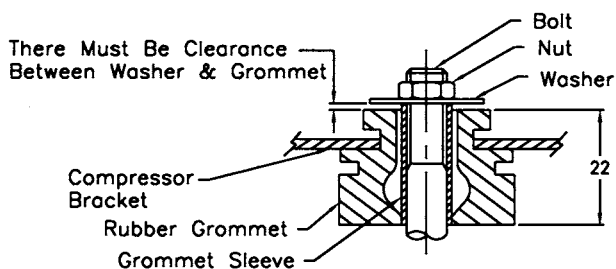
Mounting Kit

Rubber Grommet :	KMD 905-3
Sleeve Grommet :	KMD 903-2
Washer :	KEB 387

SCHEMATIC WIRING DIAGRAM - C.S.R.



MOUNTING KIT



Since we are constantly improving our product ,
the specification are subject to change without notice.

REV. DATE

01-02-05

C / N No.

0019/05