



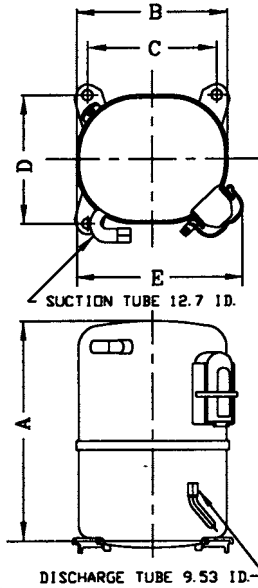
KULTHORN KIRBY PUBLIC CO.,LTD.

TECHNICAL SPECIFICATION

HERMETIC COMPRESSOR

AW2464ZK-2

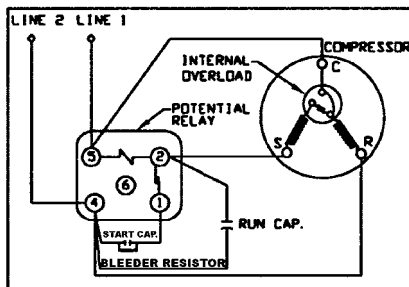
PRINCIPAL DIMENSIONS - mm



A	289
B	223
C	192
D	192
E	239

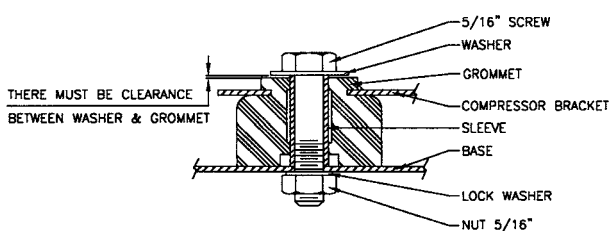
SCHEMATIC WIRING DIAGRAM -

SCHEMATIC WIRING DIAGRAM - C.S.R.



High Torque Start

MOUNTING KIT



ELECTRICAL : 208-230 Volt. 60 Hz. 1 Phase

Nominal Performance

Cooling Capacity :	1,938	Watts (6,612)	BTU/Hr
	1,666	Kcal/Hr	
Power Input :	1,475	Watts	
Lock Rotor Amps :	54.00	Amps	
Rated Load Amps :	8.10	Amps	
COP :	1.31	Watts/ Watts	

Testing Conditions

Condensing Temperature :	54.4	° C
Evaporating Temperature :	-23.3	° C
Liquid Temperature :	32.2	° C
Return Gas Temperature :	32.2	° C
Ambient Temperature :	32.2	° C

Application

Evaporating Range :	LBP	@ -34.4 ° C to -12.2 ° C
Refrigerant :	R404A	
Expansion :	Capillary Tube	
Compressor Cooling :	Fan	

Compressor and Motor data

Compression Type :	Reciprocating
Displacement :	43.1 cc.
Oil Type :	Polyolester Oil
Oil Charge :	950 cc.
Motor Type :	C.S.R. ; 2 Pole 3500 r / m
Voltage Range :	198-264 Volts 60 Hz.
Winding Resistance at 25 ° C	
Start :	4.18 Ohms
Run :	1.15 Ohms
Weight with Oil :	24.56 Kg.
Weight with Oil and Accessories :	25.12 Kg.

Electrical Components

Motor Protector :

Type :	Internal Overload
Model Number :	KGE 656-7 (15HM1701-43)
Open / Close :	120-130 / 78-60 ° C
1st Cycle trip :	48 Amps (start) 64 Amps (main)

Motor Starter (CSR Only) :

Type :	Potential Relay
Model Number :	KGE 680 (GE3ARR3-U3AT2)
Pick Up :	186-215 Volts.
Drop Out :	40-90 Volts.
Terminal Cover :	KGM 901-2

Start Capacitor (CSR Only) : 161-193 μ F 220/250 VAC.

Run Capacitor : 20 μ F 370/440 VAC.

Disch. Resistor (Alternative) : 15000 Ohms 2 W

Mounting Kit

Rubber Grommet :	KGM 905
Sleeve Grommet :	KGM 903

Since we are constantly improving our product ,
the specification are subject to change without notice.

REV. DATE

07-07-04

C / N No.

0142/04



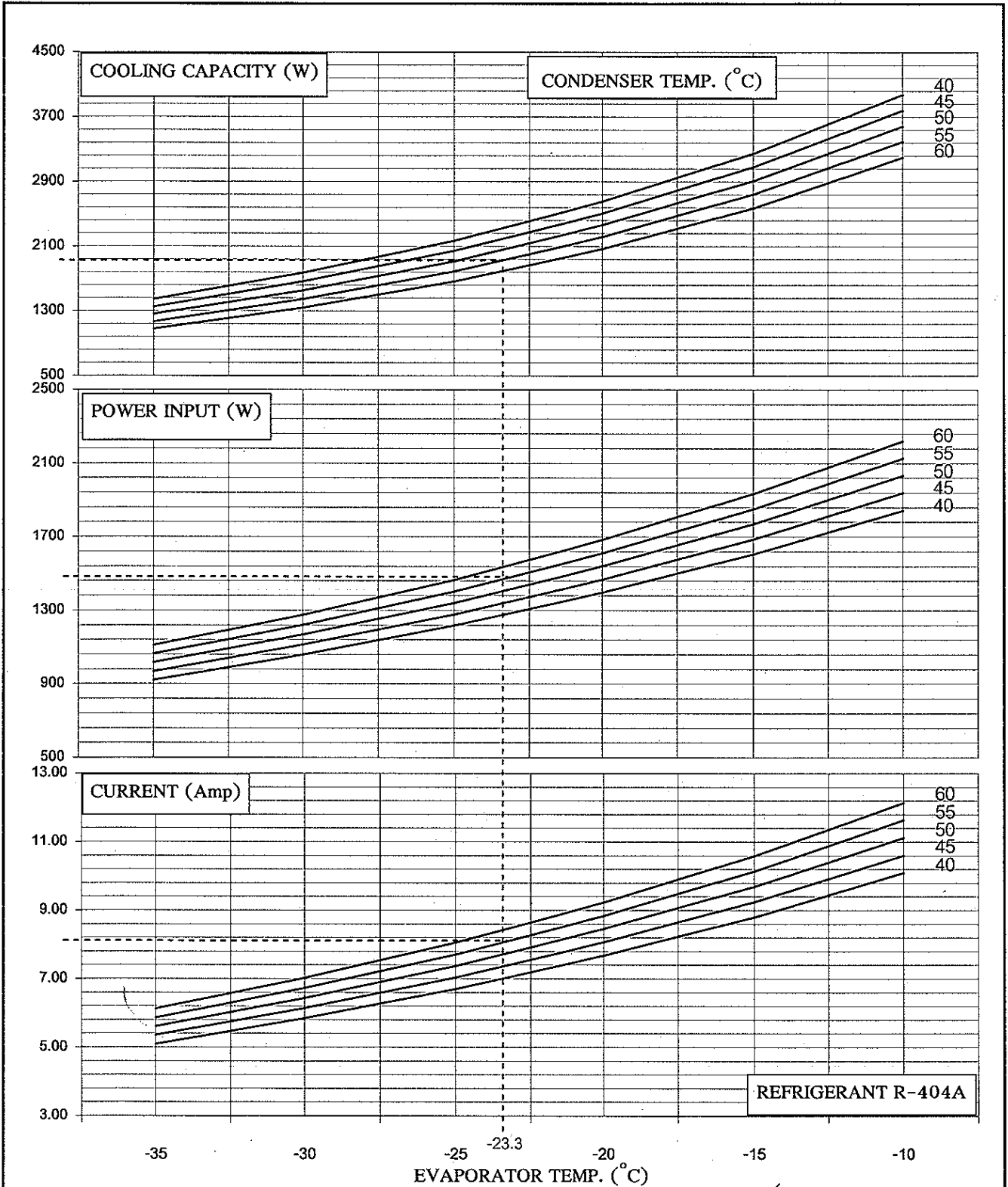
KULTHORN KIRBY PUBLIC CO., LTD.

HERMETIC
COMPRESSOR

PERFORMANCE CURVE

AW 2464ZK-2

Electrical : 208-230 Volt 60 Hz 1 Phase Motor Type C.S.R



Cooling Capacity	1938	W	} At rating Condition	Prepared by : <i>[Signature]</i> Date: 17 / 2 / 06
Power Input	1475	W		Approved by : <i>[Signature]</i> Date: 17 / 2 / 06
Current	8.10	Amp		(Supervisor)



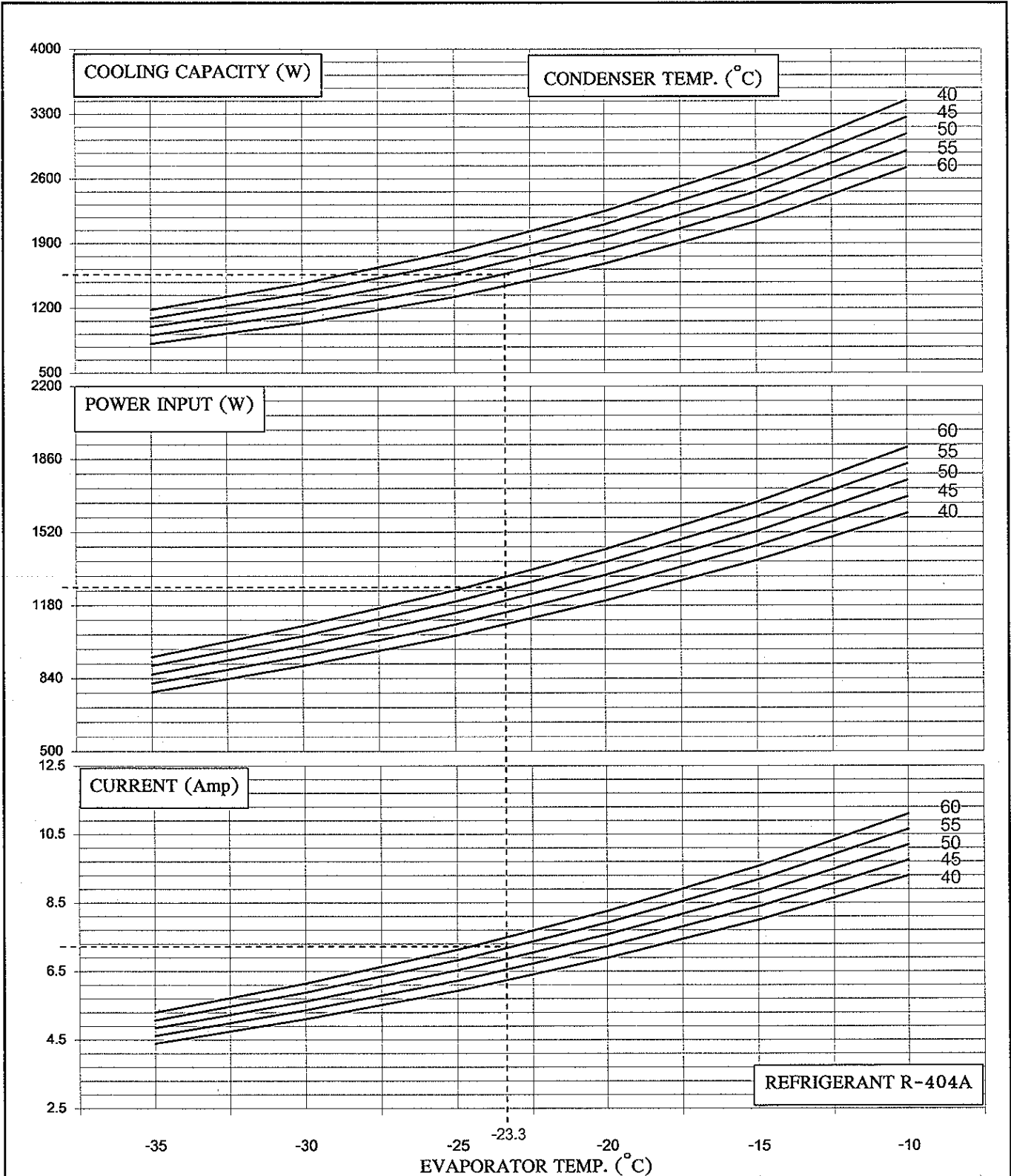
KULTHORN KIRBY PUBLIC CO., LTD.

HERMETIC COMPRESSOR

PERFORMANCE CURVE

AW 2450ZK-2

Electrical : 208-230 Volt 60 Hz 1 Phase Motor Type C.S.R



Cooling Capacity	1575	W	} At rating Condition	Prepared by : <i>[Signature]</i>	Date: 17 / 2 / 06
Power Input	1260	W		Approved by : <i>[Signature]</i>	Date: 17 / 2 / 06
Current	7.20	Amp		(Supervisor)	