

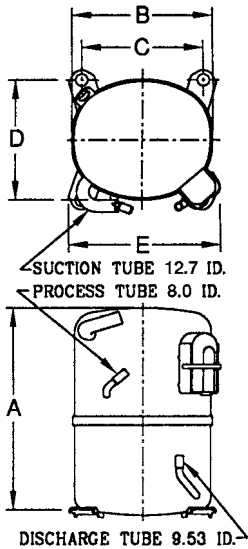


KULTHORN KIRBY PUBLIC CO.,LTD.

TECHNICAL SPECIFICATION

HERMETIC COMPRESSOR AW5520EK-2P

PRINCIPAL DIMENSIONS - mm



A	324
B	223
C	192
D	192
E	239

ELECTRICAL : 208-230 Volt. 60 Hz. 1 Phase

Nominal Performance

Cooling Capacity :	5,980	Watts (20,404)	BTU/Hr
	5,142	Kcal/Hr	
Power Input :	2,030	Watts	
Lock Rotor Amps :	51.81	Amps	
Rated Load Amps :	9.45	Amps	
COP :	2.95	Watts/ Watts	

Testing Conditions

Condensing Temperature :	54.4	° C
Evaporating Temperature :	+7.2	° C
Liquid Temperature :	46.1	° C
Return Gas Temperature :	35	° C
Ambient Temperature :	35	° C

Application

Evaporating Range :	HBP A/C	:	0° C to +13 ° C
			Heat Pump : -23.3° C to +13 ° C

Refrigerant :	R22
Expansion :	Capillary Tube
Compressor Cooling :	Fan

Compressor and Motor data

Compression Type :	Reciprocating
Displacement :	37.5 cc.
Oil Type :	Mineral Oil
Oil Charge :	964 cc.
Motor Type :	P.S.C. ; 2 Pole 3500 r / m
Voltage Range :	198-264 Volts 60 Hz.
Winding Resistance at 25 ° C	
Start :	2.70 Ohms
Run :	1.10 Ohms
Weight with Oil :	26.34 Kg.
Weight with Oil and Accessories :	26.59 Kg.

Electrical Components

Motor Protector :

Type :	Internal Overload
Model Number :	KGE 656-4 (15HM1472-43)
Open / Close :	115-125 / 78-60 ° C
1st Cycle trip :	29 Amps (start) 47 Amps (main)

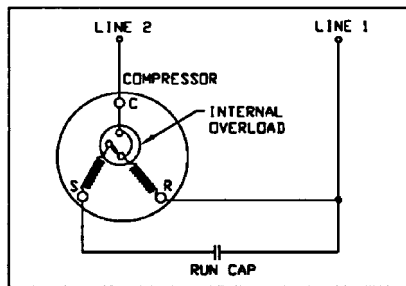
Motor Starter (CSR Only) :

Type :	Potential Relay
Model Number :	KGE 680-7 (GE3ARR3-U3P2)
Pick Up :	162-175 Volts.
Drop Out :	40-90 Volts.
Terminal Cover :	KGM 901-2
Start Capacitor (CSR Only) :	130-156 μ F 330 VAC.
Run Capacitor :	35 μ F 370/440 VAC.

Mounting Kit

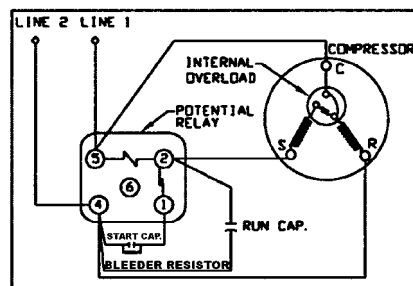
Rubber Grommet :	KGM 905
Sleeve Grommet :	KGM 903

SCHEMATIC WIRING DIAGRAM - P.S.C.



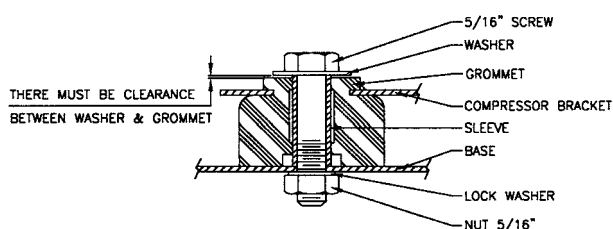
Low Torque Start

SCHEMATIC WIRING DIAGRAM - C.S.R.



Option for High Torque Only

MOUNTING KIT



Since we are constantly improving our product ,
the specification are subject to change without notice.

REV. DATE

07-07-04

C / N No.

0142/04

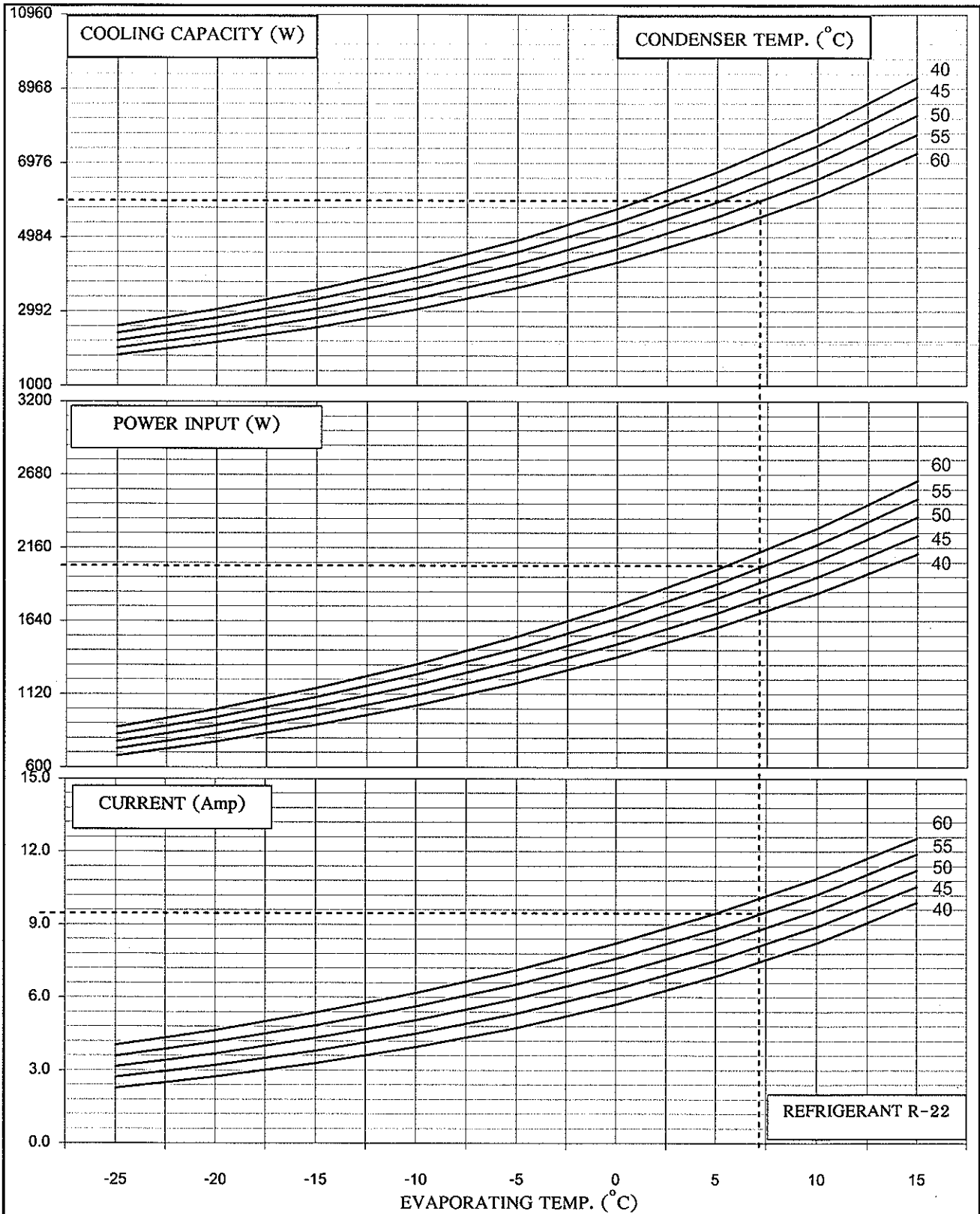


KULTHORN KIRBY PUBLIC CO., LTD.

HERMETIC
COMPRESSOR
AW 5520 EK-2

PERFORMANCE CURVE

Electrical : 208-230 Volt 60 Hz 1 Phase Motor Type P.S.C



REFRIGERANT R-22

Cooling Capacity	5980	W	} At rating Condition	Prepared by : <i>J. Vasquez</i>	Date: <i>26/07/07</i>
Power Input	2030	W		Approved by : <i>L. Chantre</i>	Date: <i>26/8/07</i>
Current	9.45	Amp		(Supervisor)	