



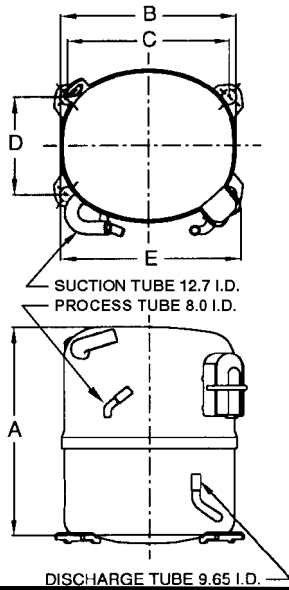
KULTHORN KIRBY PUBLIC CO.,LTD.

TECHNICAL SPECIFICATION

HERMETIC COMPRESSOR

WJ2440ZK-P

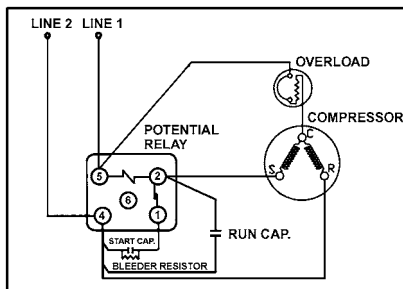
PRINCIPAL DIMENSIONS - mm



A	264
B	223
C	203
D	122
E	239

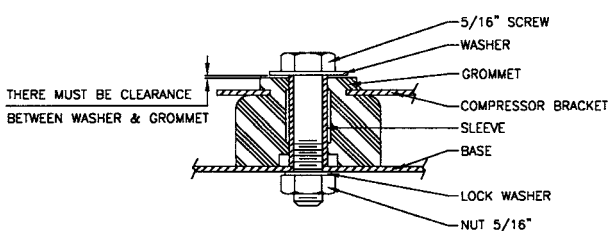
SCHEMATIC WIRING DIAGRAM -

SCHEMATIC WIRING DIAGRAM - C.S.R.



High Torque Start

MOUNTING KIT



ELECTRICAL : 220-240 Volt. 50 Hz. 1 Phase

Nominal Performance

Cooling Capacity :	967	Watts (3,299)	BTU/Hr
	832	Kcal/Hr	
Power Input :	731	Watts	
Lock Rotor Amps :	30.00	Amps	
Rated Load Amps :	3.32	Amps	
COP :	1.32	Watts/ Watts	

Testing Conditions

Condensing Temperature :	54.4	° C
Evaporating Temperature :	-23.3	° C
Liquid Temperature :	32.2	° C
Return Gas Temperature :	32.2	° C
Ambient Temperature :	32.2	° C

Application

Evaporating Range :	LBP	@ -35 ° C to -12.2 ° C
Refrigerant :	R404A	
Expansion :	Capillary Tube	
Compressor Cooling :	Fan	

Compressor and Motor data

Compression Type :	Reciprocating
Displacement :	24.20 cc.
Oil Type :	Polyolester Oil
Oil Charge :	750 cc.
Motor Type :	C.S.R. ; 2 Pole 2880 r / m
Voltage Range :	198-264 Volts 50 Hz.
Winding Resistance at 25 ° C	
Start :	6.22 Ohms
Run :	2.96 Ohms
Weight with Oil :	21.36 Kg.
Weight with Oil and Accessories :	22.10 Kg.

Electrical Components

Motor Protector :

Type :	External Overload 3/4"
Model Number :	KME 664-18/C (MST30AEZ)
Open / Close :	115-125 / 70-52 ° C
1st Cycle trip :	23 Amps

Motor Starter (CSR Only) :

Type :	Potential Relay
Model Number :	KGE 680 (GE3ARR3-U3AT2)
Pick Up :	186-215 Volts.
Drop Out :	40-90 Volts.
Terminal Cover :	KGM 901-1
Start Capacitor (CSR Only) :	145-174 μ F 330 VAC.
Run Capacitor :	25 μ F 440 VAC.
Disch. Resistor (Alternative) :	15000 Ohms 2 W

Mounting Kit

Rubber Grommet :	KGM 905-1
Sleeve Grommet :	KGM 903-1

Since we are constantly improving our product ,
the specification are subject to change without notice.

REV. DATE

13-05-02

C / N No.

0105/02